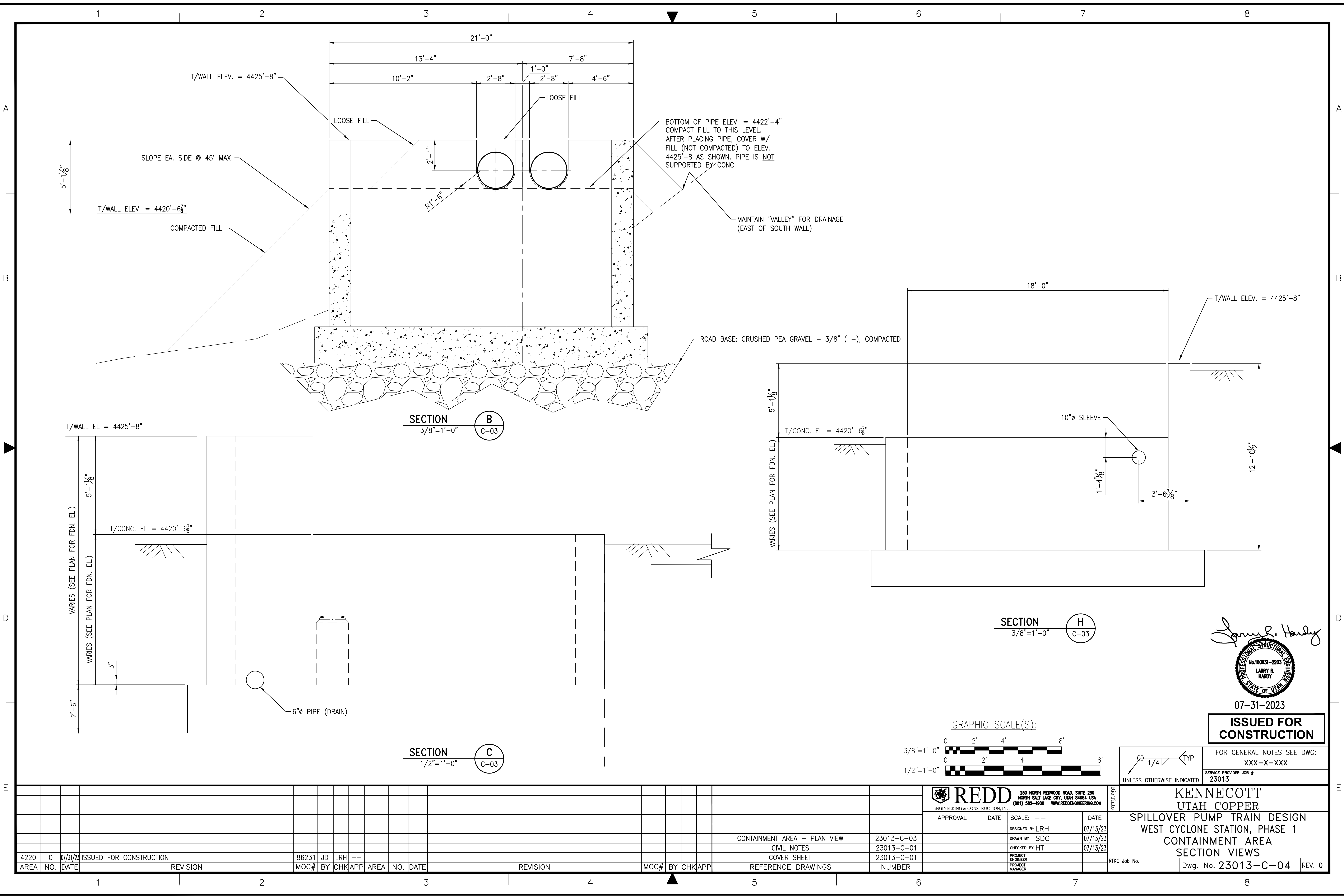


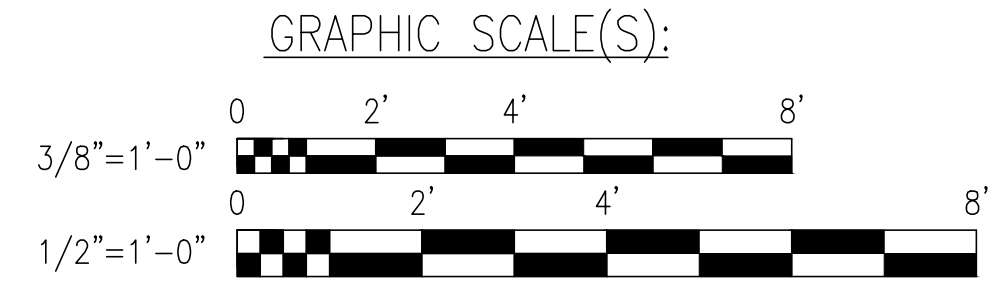
Z:\Projects\2023\23013 Spillover Pump Train Design\115 Drawing Files\Struct\From Larry Hardy\SPM\FED\23013-C-04.dwg Ames-Breeze Mon, 07/31/23 4:28 PM



**SECTION B**  
3/8"=1'-0" C-03

**SECTION C**  
1/2"=1'-0" C-03

**SECTION H**  
3/8"=1'-0" C-03



*Larry R. Hardy*  
  
 LARRY R. HARDY  
 No. 160931-2203  
 STATE OF UTAH

07-31-2023  
**ISSUED FOR CONSTRUCTION**

FOR GENERAL NOTES SEE DWG: XXX-X-XXX  
 SERVICE PROVIDER JOB # 23013  
 UNLESS OTHERWISE INDICATED

AREA	NO.	DATE	REVISION	MOC#	BY	CHK	APP	AREA	NO.	DATE	REVISION	MOC#	BY	CHK	APP	REFERENCE DRAWINGS	NUMBER
4220	0	07/31/23	ISSUED FOR CONSTRUCTION	86231	JD	LRH	--									CONTAINMENT AREA -- PLAN VIEW	23013-C-03
																CIVIL NOTES	23013-C-01
																COVER SHEET	23013-G-01
																REFERENCE DRAWINGS	NUMBER

APPROVAL	DATE	SCALE	DATE
DESIGNED BY LRH	07/13/23		
DRAWN BY SDG	07/13/23		
CHECKED BY HT	07/13/23		
PROJECT ENGINEER			
PROJECT MANAGER			

**REDD** ENGINEERING & CONSTRUCTION, INC.  
 250 NORTH REDWOOD ROAD, SUITE 280  
 NORTH SALT LAKE CITY, UTAH 84054 USA  
 (801) 582-4900 WWW.REDDENGINEERING.COM

**KENNECOTT UTAH COPPER**  
 SPILLOVER PUMP TRAIN DESIGN  
 WEST CYCLONE STATION, PHASE 1  
 CONTAINMENT AREA  
 SECTION VIEWS

RTRC Job No. \_\_\_\_\_ Dwg. No. 23013-C-04 REV. 0